



# Error Code Keypad User Manual



## **Table of Contents.**

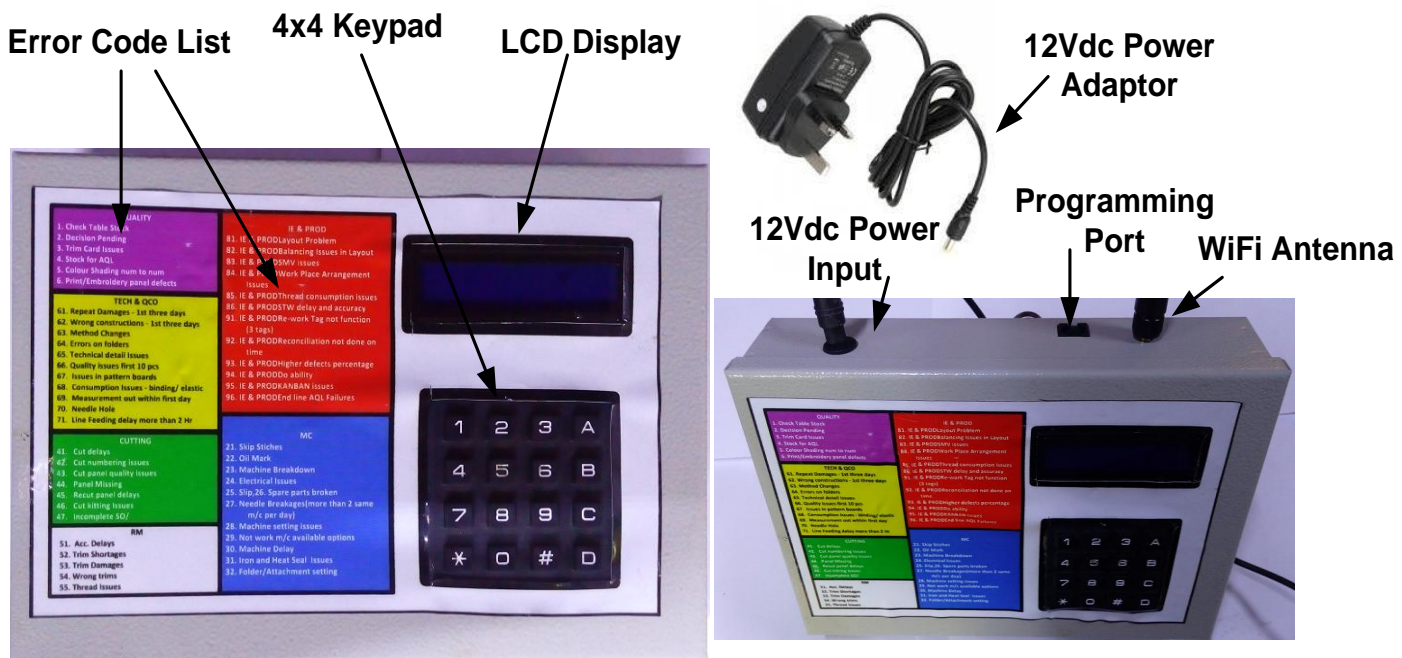
<b>1. Introduction</b>	<b>03</b>
<b>2. Product Overview</b>	<b>03</b>
<b>3. Schematic Diagrams</b>	<b>05</b>
<b>4. Dimension and Installation</b>	<b>06</b>
<b>5. Specifications</b>	<b>07</b>

# 1. Introduction

The “Error Code Keypad” is used to send pre-defined error codes to Andon software running on a computer. The error codes should be numeric and maximum 3 digit long. This numeric codes convert to relevant Error description at the Andon software.

12V,1A SMPS power adaptor used to power the device. Standard “SHUNCOM SZ12” module is used to communicate with Andon software through WiFi network. The device is controlled by user friendly operating system.

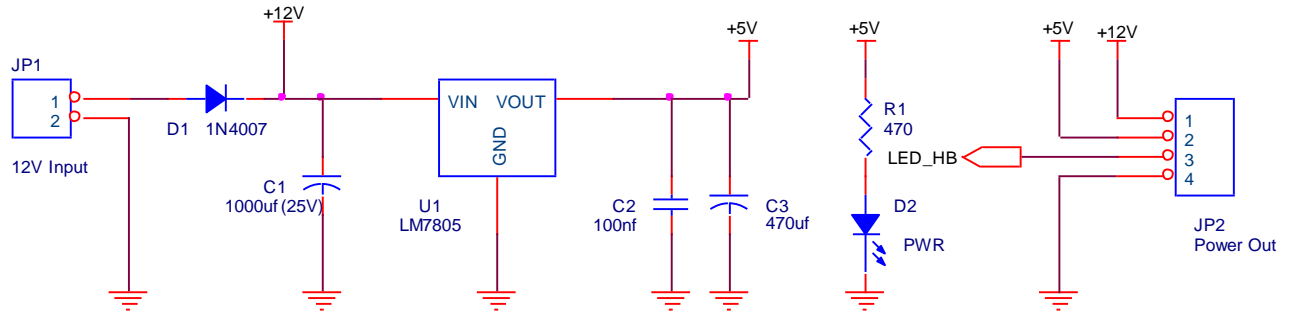
# 2. Product Overview



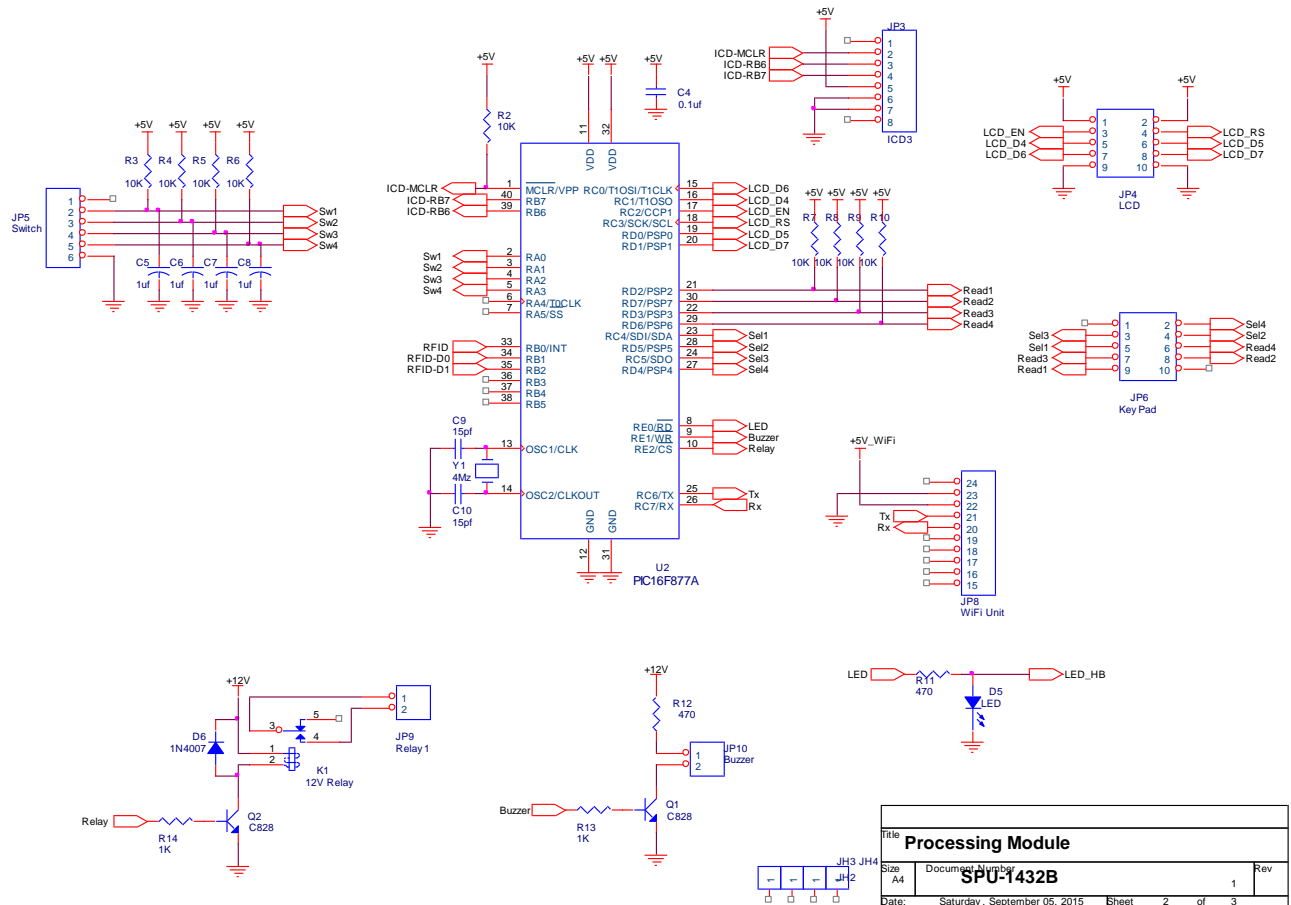
1. **Error code list** : User defined error code list.
2. **4x4 Key pad** : Numeric keypad used to enter error codes in to system.
3. **LCD Display** : TOPWAY (LMB162) Liquid Cristal Display is used as the display screen. Display error codes which is entered by 4x4 keypad.
4. **12Vdc Power Input** : Power supply input for this unit.
5. **12Vdc Power Adaptor** : 12V, 1A SMPS Power supply.
6. **WiFi Antenna** : WiFi connectivity is used to communicate data with computer. Standard SHUNCOM- SZ12 module is used for this function.

### 3. Schematic Diagrams

#### Power Supply Unit

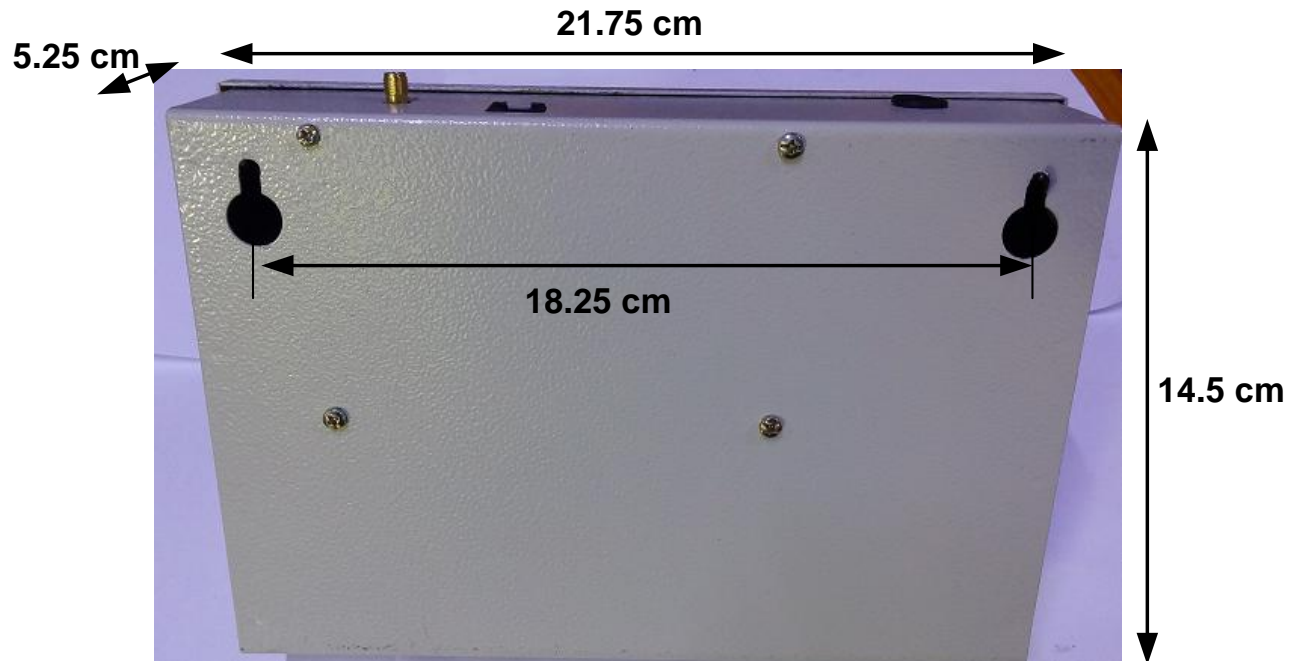


#### Processing Unit



Title <b>Processing Module</b>			
Size A4	Document Number <b>SPU-1432B</b>	1	Rev
Date: Saturday, September 05, 2015	Sheet 2	of 3	

#### 4. Dimension and Installation



- Mount on a solid surface.
- Install this unit at eye level in order to allow keypad to be access and the LCD display to be read at all times.
- Dust conditions on the unit may impair the performance of this unit.
- The ambient temperature should be between 0°C and 35°C to ensure optimal operation.

## 5. Specifications

<b>SN</b>	<b>Parameter</b>	<b>Value</b>
1	DC Voltage	12 Vdc
2	DC Current	1 A
3	Baud-Rate	9600 bps
4	Operating Temperature	0 ~35 'C
5	Communication	TCP/IP
6	Dimension D x W x H	22.5 x 15.0 x 4.5 cm

**“Qio” Queue Management Systems**

**Electronic Andon Systems**

**Sky Security Systems**

**Digital Watches and Timers**

**Alarm Systems**

**Power Supplies**

**LED Display Systems**

**Electronic Books**

**Electronic Classes**

**PIC Microcontroller Accessories**

**Printed Copper Boards**



**Sky Technologies.**

For all kind of Microcontroller Based electronic circuit Designing,  
PCB designing and fabricating.